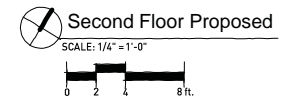


LEGEND

- New Construction
- Public Areas / Circulation
- Administrative Areas
- Museum Exhibit Areas



1300 N. Broadway
Knoxville, TN 37917
Phone - 865-525-9945
Website - www.communitydc.org



Funding for this project is provided by Plan ET
 A Regional Partnership of
 East Tennessee Communities
 ANDERSON • BLOUNT • KNOX • LINDSEY • WALKER

Coal Creek Miners Museum

Lake City, TN

Date: December 2, 2013 CDC Project #1997

SUSTAINING MEMBERS: Bullock Smith & Partners • Clayton Family Foundation • Design Innovations Architects
 Dewhirst Properties • McCarty Holsaple McCarty Architects • Shoffner Kalthoff • Sparkman & Associates • Wystwynd Designs Inc.

This project is in association with Anderson County Tourism Council - Stephanie Wells, #865-457-4547.

Professional Advisor: Greg Campbell, AIA
 CDC Coordinator: Leslie Fawaz, AIA
 CDC Staff: J. Perry Childress
 CDC Intern: Benjamin Luttrell
 CDC Director: David Watson
Conceptual Presentation Drawings
NOT FOR CONSTRUCTION

SECOND FLOOR

1 2 3 4