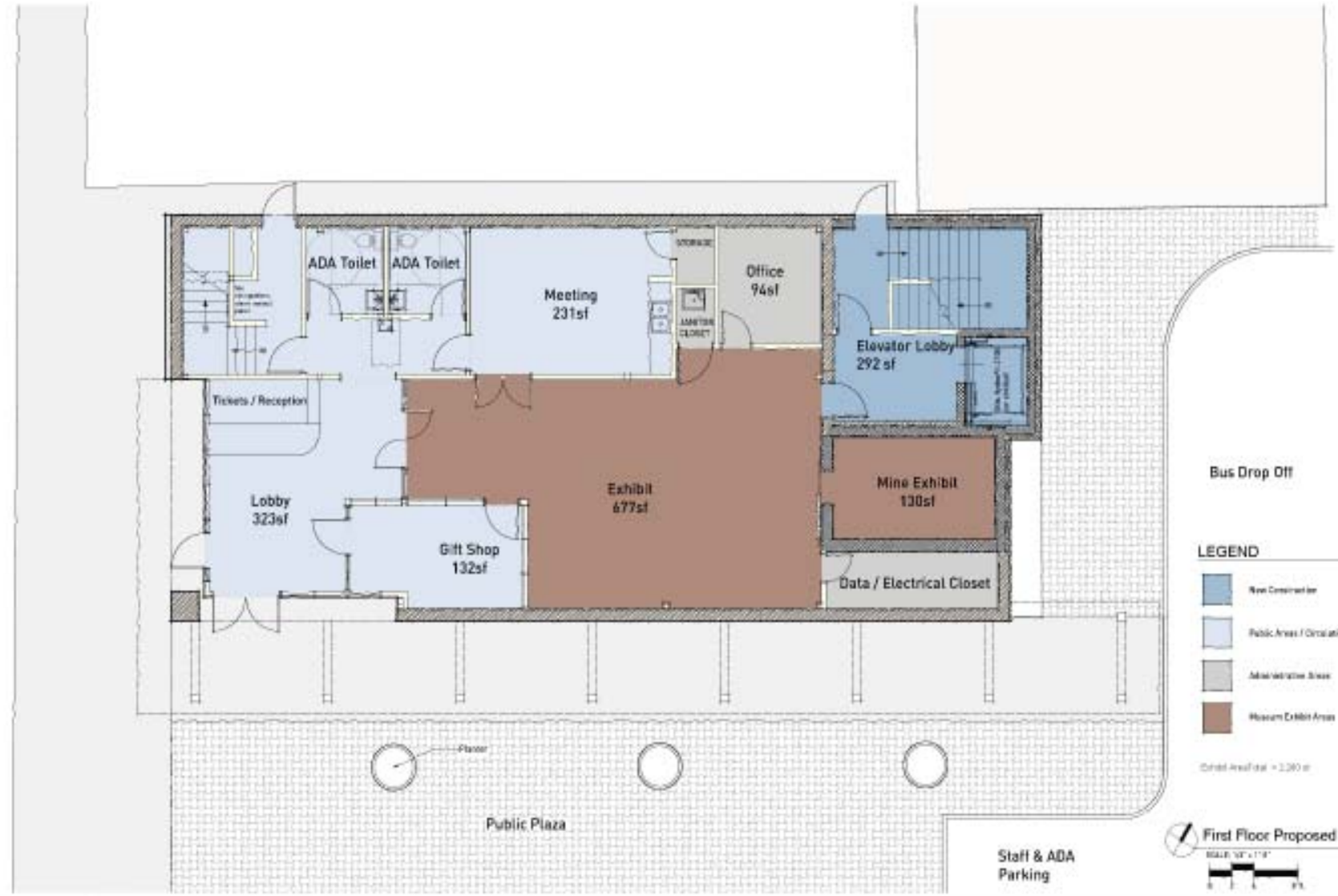


Main Street (U.S.Hwy. 25W)



Bus Drop Off

LEGEND

- New Construction
- Public Areas / Circulation
- Administrative Areas
- Museum Exhibit Areas

Exhibit Area Total = 1,200 sf



Staff & ADA Parking



1300 N. Broadway
 Knoxville, TN 37913
 Phone - 865-525-9145
 Website - www.communitydc.org



Funding for this project is provided by **planET**
 PlanET is a proud member of
 East Tennessee Communities
 2008-2010-2011-2012-2013-2014

Coal Creek Miners Museum

Lake City, TN
 Date: December 2, 2010 CDC Project #1997

Professional Advisor: Greg Semmes, AIA
 CDC Coordinator: Lydia Lewis, AIA
 CDC Staff: J. Penny Childress
 CDC Intern: Benjamin Luskoff
 CDC Director: David Watson
 Conceptual Presentation Drawings
NOT FOR CONSTRUCTION

FIRST FLOOR
 ■ ■ ■ ■ ■

SUSTAINING MEMBERS: Balace Smith & Partners • Clayton Family Foundation • Design Innovations Architects
 Steel/13 Properties • McCarty Holmgren McCarty Architects • Stechner Kubistoff • Sparronson & Associates • Wytajewski Design Inc.

This project is in association with Anderson County Tourist Council - Stephanie Wells, #965-457-4547.